

# Broad Bay Community Centre



Clearwater Street

[www.broadbay.co.nz](http://www.broadbay.co.nz)

Facebook: @BroadBayCommCentre

Local News – May 2021

*If you are new to Broad Bay, welcome! Lots of activities and notices, including Broad Bay Community Centre (BBCC) updates.*

**BROAD BAY JOINS THE DUNEDIN STREET ART SCENE:** Have you been to BBCC to welcome our kaitiaki, Te Wheke? It's well worth a visit to see this striking new mural gifted to Broad Bay by Dunedin artist Toothfish. We hope you enjoy this beautification project and that you'll invite friends and family to admire it. We'd also like to thank everyone who attended and helped with the 2019 New Year's Eve party which raised the funds for the paint and a koha to thank Toothfish for his time and talent.

**A/V SYSTEM NOW AT THE HALL:** The BBCC Hall now has an **A/V system**, including a video projector, screen, speakers, cordless mics, and a disco ball. It's easy to connect your phone (by bluetooth or cable) for music, and community meetings / presentations are clearer with a big screen + mics. (Lala Frazer says we're now "the best equipped hall for events on the Peninsula"). Funding was from the Otago Peninsula Community Board and youth fundraisers held at the hall. It was installed primarily to support youth gatherings, but all renters of the BBCC Hall are welcome to use it. When you make a booking, please ask Zoe to connect you with Matt so he can show you how it all works.

**FREE TRIAL OF THE HALL OR ETHERIDGE ROOMS (the cozy rooms behind the hall):** Did you know that you can trial using the BBCC spaces to hold your classes, meetings, talks? To discover if our spaces work for your needs, or to explore viability and attendance rates, then talk to us about a free trial! We're also happy to discuss options for free public events. Contact Zoe or Amber (contact details at end of this newsletter).

**BELLY DANCING CLASSES AT THE HALL, Thursdays 7pm to 8:30pm:** My Belly Dance class is really about using an ancient holistic exercise to strengthen core muscles through low-impact movement. This is appropriate to all women, not discriminating age, size, or orientation. Through developing little used core muscle groups, we prevent back injuries. I stress that this is low-impact and will not hurt you, despite size or age! Muscles may get sore as they get strong, so I recommend magnesium to students. I ask students to wear a form fitting stretch top, leggings or yoga pants, and dance shoes or barefoot. Socks are slippery and dangerous. Be prepared to laugh and have fun with friends and neighbors. As a way to give back to our community which has supported us so kindly, I ask only koha. If interested, please come along, or for more information call or text me, 021 0823 2155. Peace, Machen



**NARCOTICS ANONYMOUS** 'LIVING CLEAN MEETING' Broad Bay Community Centre, Clearwater St. 7pm Tuesdays. Ph 0800 628 632 <https://nzna.org> DRUG PROBLEM? WE CAN HELP.

**BROAD BAY YOGA** continues on with our beloved Sunday yin classes. 4pm at the community hall, no experience needed and all welcome. No head-stands, promise! \$15 casual class or locals' discounts available. Contact [chelseagawron@gmail.com](mailto:chelseagawron@gmail.com) for further details.

*Chelsea is also organizing a **Dunedin Plant Fair**: Save the date! 25th September 10am-2pm at the South Dunedin community hall. Currently taking expressions of interest for stall holders. Contact [plantpeopleofthesouth@gmail.com](mailto:plantpeopleofthesouth@gmail.com)*

**CASELBERG TRUST CREATIVE CONNECTIONS RESIDENT 2020/21** is dance and performance practitioner, Lucy Marinkovich, a Wellington-based freelance dance artist and choreographer. Lucy is working on a dance performance in which the audience is invited to join a lone albatross as it adventures across an incomprehensibly vast oceanic realm. "I seek to explore and communicate an artistic allegory for the climate crisis, and I hope to express this through the fragile beauty of birds." This show will be premiered in Dunedin later this year. As part of the Residency, Lucy is also working with the Broad Bay School students and staff creating small scale productions in parallel to her own work. Lucy is also the 2021 Univ of Otago Caroline Plummer Dance Fellow working with Parkinson's NZ to develop programmes using dance and live music to enable people living with Parkinson's to explore and develop new ways to move improving both their functional

(movement) and emotional wellbeing. It's very interesting and exciting work. Come along, meet and hear from Lucy herself at the Caselberg Trust's "Meet the Artist" afternoon on **Sunday 30 May at 2pm**, at the Caselberg House, 8 Gwyn St, Broad Bay (drinks and nibbles provided). Please be considerate about parking. No parking on Gwyn St, drop off here only, please.

**3 OLD KAYAKS LOOKING FOR THEIR OWNERS** ... 3 very old kayaks (1 yellow double fibreglass, 1 single yellow fibreglass and one single green with white dots canvas – upper middle in photo) have been loitering without intent for years near the waters edge in Broad Bay and have become engulfed in the vegetation. We have never seen anyone use these 3 kayaks and are keen to tidy up this bank so if any of them are yours and you want them back please call us to arrange collection by the end of **June** or we plan to remove them. (NB *Not* the pink/mauve one, bottom left – we know who this belongs to and it is frequently used.) Contact Janet 0211021762 and Lesley 0274381291.

*Before weeding*



*After weeding*



## **BROAD BAY SCHOOL**

In April, we held a very special mihi whakatau to welcome dance artist and choreographer Lucy Marinkovich, the Caselberg Trust Creative Connections Resident. We were delighted to welcome Lucy and the Caselberg Trustees to our school and renew our partnership with the Trust. Lucy is working with our students in the creation of their own miniature theatres and minute-long productions, which requires consideration of plot, character, music, scenery, and lighting. Our dedicated science tutors, John and Diana, are busy developing lessons on levers, gears, pulleys, etc. to develop moveable aspects of the theatres. With principal Greg having starred in *Les Miserables*, we had the fantastic opportunity to visit the Regent Theatre for a behind-the-scenes look at a real set. Being on the rotating stage and having a tug-of-war with the pulleys were highlights for our students, who gained a lot of insights that sparked ideas for their own projects. Last Wednesday, we visited the Peninsula Connection roadworks site at Broad Bay. Jamie, Jason and their team from Fulton Hogan ensured our visit was fun and educational. Our juniors loved seeing the machinery up close, and our seniors learned about the maths. Did you know there are around a million rocks in that wall?!

**Please watch out for the children:** With the Broad Bay section of the walkway/cycleway nearing completion, there has been an increase in the number of children who are walking, biking and scooting to school. We love to see our students getting active and enjoying the outdoors, and we educate them about road safety awareness, such as sessions with the DCC's cycle safety team. We'd ask our community to please be mindful of children when you are out and about in your vehicles, both around the new shared path and on back roads. Children can be unpredictable and don't have the same awareness of risks as adults, so it's important for us drivers to maintain safe speeds and vigilance to ensure everyone's safety.

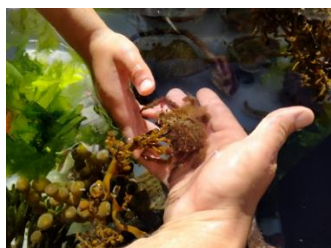
**Friday morning playgroup at Broad Bay School:** There's been interest in getting our Friday morning Playgroup up and running again, and we'd love to if there's sufficient interest. This would be an informal group, co-ordinated by local parents, with a warm area to sit and play and tea and coffee facilities provided by the school. If this is something you

would like to come along to, then please let us know. You can visit [tinyurl.com/BBSPlaygroup](http://tinyurl.com/BBSPlaygroup) to fill in our online expression-of interest form, or get in touch by phone (478 0706) or email ([office@broadbay.school.nz](mailto:office@broadbay.school.nz)).

**SAVE THE DATE – Book Rummage, October 28th 2021** from 5-8pm. Expect an amazing range of second-hand books, as well as the amazingly popular plant sale, don't forget the cool school merchandise for your Christmas gifts and the bake sale for your pantry! And this year watch out for an expansion of the food market for your dinner too. Donations of books and seedling pottles can be dropped off at Broad Bay School reception or contact Joanna ph 027 721 8463.

**KNITTING and CROCHET Group:** Learn to knit or crochet, or improve your skills. Meet at my home: Elsie Sanderling, 28 Frances St, **Wednesdays 7.30 - 8.30 p.m.** Ph 4780509, text 027 338 2706. **No charge!**

**YOUTH ACTIVITIES AND EVENTS:** Your Broad Bay Community Centre is now very well kitted-out as a venue, thanks to the Otago Peninsula Community Board supporting our initiatives to support our local youth especially. Now we invite anyone one in the community who wants to host youth-centred functions to contact us via Amber ph 022 590 9300, or Zoe ph 027 285 4569. Also we would love to hear ideas and feedback from youth members of the community about how their social needs could be met within our lovely wee community.



**MARINE ENCOUNTERS at the NZ Marine Studies Centre:** Sunday **20<sup>th</sup> June**, 10.30am-12pm or 12.30pm-2pm. Join us for our monthly tour of the NZ Marine Studies Centre at Portobello, connect to your coast and meet local marine species at our touch tanks to find out what makes them special, vulnerable and resilient. We'll also get an insight into climate change research currently underway at the Portobello Marine Lab, and discover ways we can look after our coast. Book here: <https://bit.ly/encountersmarine>

**BIRD RESCUE:** If you encounter any birds needing help, whether they are orphans or injured, native or non-native, please contact me here in Broad Bay: Suzy, at [www.littlebirdrescue.org](http://www.littlebirdrescue.org) or at 02041514504 (text preferred). If you see a bird and are not sure if it needs help, I am happy to advise, and if I am unable to take birds in for care I can refer to other rescues, vet clinics, or the Wildlife Hospital. Thank you for caring about our local bird population!

**THE BROAD BAY COMMUNITY GARDEN** continues to welcome all with an interest in vege growing and harvesting. Generally we meet for a working bee on the second Saturday of each month at 3 or 3.30 pm, depending on the season. To go on the email list or find out more, email: [pen@penelopetodd.co.nz](mailto:pen@penelopetodd.co.nz)

**BROAD BAY FOOD CO-OP:** We invite you to join the Co-op with fresh produce bought fortnightly at the Farmer's Market for members. Members only need buy what & how much they choose and have easy, 24-hour access to the produce. We keep an ongoing stock of eggs, potatoes, onions & many varieties of apples. We also have organic citrus when available. Contact Lala Frazer 478-0339 or Fran Bolgar 027 323 5581.

**MARY QUEEN OF PEACE is a historic little Catholic Church** that welcomes people to a service once a month on the third Sunday of each month at 11am. It is a very friendly and inclusive little church and everyone who comes usually stays on for a cup of tea afterwards. It has been located at Broad Bay since 1948 but was originally built by the Polish community out on the Taieri at Waihola back in 1899, which is why some people call it the Polish church. The dates for the rest of the year will be 20 June 18 July, 15 August, 19 September, 17 October, 21 November, and 19 Dec. All welcome. You will find Mary Queen of Peace near the Fletcher House, tucked in the back there.

**SAVE THE OTAGO PENINSULA (STOP) NEWS:** Finally, now that we have had a bit of rain, planting can start. You may wish to assist with the purchase of plants. Either a group of plants or just a single tree (\$15 each) to commemorate a family event? Come and plant it/them yourself or the regular volunteers will do it for you and look after it for 3-4 years before it becomes independent within the Future Forest at Smiths Creek, which has become an increasingly popular recreational area, particularly for those exercising their dogs. Save The Otago Peninsula (STOP) Inc Soc regular volunteer working bees occur on Tuesday, and Sunday starting at 9.30am. Two to three and a half hours duration. More volunteers



always welcome. Meet at the no exit end of Bacon St, 17km from town off Turnbolls Bay on the Otago Peninsula. The No. 18 bus to Portobello will drop you off at the other end of the street if you are coming from Macandrew Bay or town. For more information contact Lala: Email , or Mobile (text only) 027 8756 020

**DUNEDIN PUBLIC LIBRARY'S BOOK BUS** comes to **Broad Bay** every **Wednesday, 11.15-12noon**. On Roebuck Rise, outside the School. And if what you are looking for isn't already on the bus, they are happy to request in for you.

**PENINSULA PUMP TRACK!** *For those of us who don't have a bike or skateboard and who might not know what a pump track is, look up the Queenstown version and watch the fun to be had from this exciting new project:*

**PENINSULA PUMP TRACK**

**PUB QUIZ  
FUNDRAISING  
NIGHT!**

Teams of 4-6 | \$5 per person

with  
**Raffles and Auctions on the night!**  
**BRING CASH**

Register on the night or before by emailing:  
pbocomm.inc@gmail.com

**THURSDAY JUNE 24TH | 7PM**  
**PORTOBELLO HOTEL & BISTRO**

**PLUS THE PENINSULA SPRING OPEN GARDEN CALL:** The Peninsula Pump Track is fundraising to get started on building the track in the Portobello Domain early next year. We will be running an Open Garden Day as part of these fundraising efforts. If you would like to offer up your garden as part of the tour, please send us an email at [pbocomm.inc@gmail.com](mailto:pbocomm.inc@gmail.com) and we can send you some more information.

**NEXT PORTOBELLO SKIP DAY** 13 June 2021 10am-4pm, at the Domain off Allens Beach Rd. See Dunedin City Council website for details of what will, or will not, be accepted.

**BADMINTON:** Portobello Coronation Hall, Sundays, 7pm. This is a chance for friends and family to give badminton a go, all equipment provided. We ask players be from High School age up. Adults: \$2 per night; High School/ University students: \$1. After 3 nights playing you can join the club following an annual sub. Any questions, contact Geoff Sheridan: 03 4780 688.

**PENINSULA TOY LIBRARY** is open every Sunday morning 10:30 - 12:30, Domain Pavilion, Allans Beach Road, Portobello.



**THAT BLOODY WOMAN:** Taieri Musical is proudly bringing That Bloody Woman to South Dunedin's Mayfair Theatre this July 22-31, 2021 — directed by one of Broad Bay's own, Kim Morgan!

Kate Sheppard is back. New Zealand's favourite daughter—one of the most important figures in the history of suffrage and women's rights—now has her own rock musical. From humble beginnings in a tent in Christchurch, TBW became a nationwide sell-out smash. "Like Hamilton for the US, That Bloody Woman is the musical NZ didn't know it needed."

Kate and her Gang will storm the Mayfair to tell her story ... and to give us an almighty kick up the bum >125 years later. See Kate and her friends transition from temperance to suffrage; take on the misogynistic Prime Minister of the day (Richard "King Dick" Seddon); make many personal sacrifices along the way; and ultimately persuade ¼ or NZ's female population to sign a landmark petition — all to a rocking beat!

Tickets will be available from [www.taierimusical.org.nz](http://www.taierimusical.org.nz) or via their Facebook page around mid-June.

**MUSEUM NEWS:** We are Otago Peninsula Museum and Historical Soc and based in Portobello but we cover the whole Peninsula. We welcome any items/photos/Family info from anyone on the Peninsula as long as items come from our area. Often relatives of Peninsula families call in or email about more information: and we ask that if you have a Family Tree then it would be good to have a copy at the Museum – doesn't matter how long you have lived here, it will be available for relatives into the future. ANZAC Day held at the Museum was well attended. Thanks to those who provided the morning tea in the Barn. We also have a display of information of our local men. This year our focus was on the boys from the Pukehiki, Highcliff and Sandymount area who went off to WW1. The Tuesday volunteer men managed to get the Canon all finished and on display for the day. This Canon used to sit on the seaside opposite the Portobello Hall. It fell into disrepair and the Museum took on the job of restoring it. The Museum has had lots of Kiwis visiting which has been great. We are open Sundays 12.30-3.30. Adults/\$2, children/free. If you want to contact us the email is [theotagopeninsulamuseum@gmail.com](mailto:theotagopeninsulamuseum@gmail.com)

#### MACANDREW BAY SCHOOL ART AUCTION

Many of the artists in our community may be starting to wonder if we plan to hold our biennial Art Auction this year and the answer is definitely yes. We hope to hold it in November and once we have confirmed a date and venue we will send our usual letter out by email to see if you would like to be involved again this year. We really appreciate the great support we get from our Peninsula artists every two years. If you are an artist new to the area please feel free to get in touch with your details and email address and we will add you to our list.

Email [principal@macandrewbay.school.nz](mailto:principal@macandrewbay.school.nz) or [macbayartauction@gmail.com](mailto:macbayartauction@gmail.com)

#### OTAGO PENINSULA COMMUNITY BOARD NEWS

**Broad Bay Jetty Seat** On the reserve was a seat made from the old Broad Bay jetty piles that had a plaque from former Mayor Sukhi Turner. The seat is to be returned to the beach reserve as part of the Peninsula Connection Project. It will have to be slightly different due to some rot in the old timber. Anything left over is to be donated to the Broad Bay School who expressed an interest in the remaining old timbers.

#### Peninsula Connection – Opening Company Bay to Broad Bay section – Sunday 27 June

The Company Bay to Broad Bay section of the Peninsula Connection road safety project is nearing completion and will be officially opened by the Mayor at 11am on Sunday 27 June at the Broad Bay Reserve car park, followed by a BBQ. With over 9,000 native plants along the new 3.3km Portobello Road shared cycle/walk path, this section also has several features to improve road safety. Walk or cycle along the new shared path before the opening speeches and experience the landscaped paths, native plants and purpose-built boardwalk.

For more information about the project see [www.dunedin.govt.nz/peninsula-connection](http://www.dunedin.govt.nz/peninsula-connection)

#### CYCLEWAY ETIQUETTE

- Stay left ... Avoid sound cancelling headphones ... Turn your music down ... Have your dog on a short leash ... Use your bell ... Wear bright, reflective clothes ... Speedsters use the shoulder!

**PORTOBELLO PRESBYTERIAN CHURCH, 10am:** MAY 16, Pat Graham Study Group on Prayer 2; JUNE 6 Jane Cox, Church Service; JUNE 20 Sheila Clarke Study Group on Prayer 3; JULY 4 Jane Cox, Church Service; JULY 18 TBA Study Group on Prayer 4. Please contact John on [cedartoursnz@gmail.com](mailto:cedartoursnz@gmail.com) or call 0220108923 if you require more information.

**GET LOCAL NEWS BY EMAIL:** If you have local news to share, contact Lala at [lala.frazer@gmail.com](mailto:lala.frazer@gmail.com). People are listed by street so that some notices (eg. lost and found animals) are better targeted. If you'd like your name added to the list, please contact Lala. Your email address is not made public. You can ask to be removed.

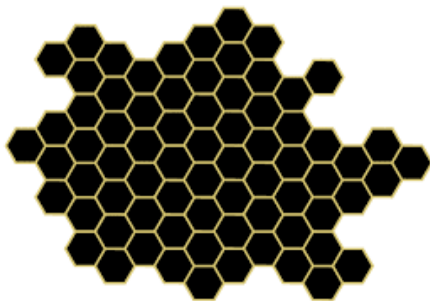
**READ THE MACANDREW BAY AND PORTOBELLO NEWSLETTERS ONLINE:**

[www.macandrewbaynews.org.nz](http://www.macandrewbaynews.org.nz)

[www.portobello.org.nz](http://www.portobello.org.nz)

**FOR SALE, WANTED TO BUY, WORK/WORKERS WANTED**

**TEE'S BEES HONEY:** Raw and creamed organic Honey \$12.50 for 500g or \$22 for 1kg \$2.50 per stick of wax \$7 per block of wax Cardboard containers and lids can be burnt, composted or returned. Packed at 252 Tirohanga Road. Tristan - Broad Bay 0210306407.



**And Tristan is looking for work too:** Hi my name is Tristan and I live in Broad Bay. I am 14 (nearly 15) and looking for jobs. I am a self-taught bee keeper (with the help of some friends), help out at an organic dairy farm, grow veggies better than mum, build stuff with dad, walk a friend's dog, cut grass. I am also: a practical learner, an out of the box thinker, sociable, honest, reliable, and kind. I am keen to find work: on a farm, with bees, in a garden or fishing, but will consider anything else. Please call - 021 030 6407.

**20FT CONTAINER FOR SALE:** \$4500: Shukuru's amazing fundraising efforts to get essential school supplies sent to Kalema Primary School in Tanzania mean that her original 20ft container isn't big enough! Therefore the 20ft container is being sold to raise money to buy a 40ft one. To buy, please contact Shukuru ph 027 384 5052. P.S. Donations of school stationery, backpacks etc or funds are still being gratefully accepted too!

**LOCAL PENINSULA FLORIST AND GARDENER:** The Good Seed (aka Eden Flowers) - Chris Abbott Floral Artisan, Sustainable Ethical Eco design. Free delivery Broad Bay, Portobello and Mac Bay, 022 0357392, [www.thegoodseed.co.nz](http://www.thegoodseed.co.nz)

### **BROAD BAY COMMUNITY CENTRE**

**Enquiries welcome:** Does having the new sound system installed in our hall inspire you to host community activities or perhaps a private event? Maybe the cozy space of the Etheridge Rooms would be perfect for your smaller gathering? These spaces and great amenities are here for the good of the community so please consider them when you are planning events.

**HALL BOOKINGS:** contact Zoë Fox, 0272854569, [zoefoxnz@gmail.com](mailto:zoefoxnz@gmail.com) or (Amber Sharma, 0225909300, [broadbaycommunitycentre@gmail.com](mailto:broadbaycommunitycentre@gmail.com), if you can't get hold of Zoë).

**HALL HIRE:** Basic rate is \$11 per hour for the Hall or the Etheridge rooms (behind the hall, with grass area). Contact us for special rates too - for longer or trial periods, or open-to-the-public events. Equipment: (tables, chairs, crockery, cutlery) available for members to borrow: a donation will be negotiated. **BONUS!** Community Centre members don't pay a bond PLUS get 1 free hour hire (single membership) / 2 free hours (household membership); or combine free hours with others. Don't forget the table tennis equipment there also.

**DO YOU HAVE A NOTICE FOR FUTURE NEWSLETTERS?** Please contact Jane Ashman: 4780440, 02102710950, [jane.ashman@otago.ac.nz](mailto:jane.ashman@otago.ac.nz). Thank you to the Otago Peninsula Community Board for funding towards the newsletter, and to the wonderful volunteer deliverers.

**Current BBCC committee members:** Amber Sharma, Chris Obbeek, Joanna McDouall, Shukuru Munro, Matt Morgan, Robin Harvey, Rolien Ham-Thomas, Zoë Fox, Jane Ashman.